



windsor telecom®
making technology easy and enjoyable



**Find new and better ways to
connect, communicate and
collaborate.**

We're connectivity and communications experts and help businesses like yours improve their colleague productivity and customer experience through easy and enjoyable technology.

Reliable, secure and fast fibre broadband.

Your top priority is keeping your business productive and focused; ours is providing you with the fast and reliable internet and communication solutions that help you achieve that.

Windsor Telecom is your local CityFibre partner. Our dedicated team is ready to help businesses on Slough Trading Estate find the right solutions to help you connect and communicate better.

Our experts will always take the time to listen to what you need. We'll then work with you to find the fastest solution for the right price, right up to speeds of 1Gbps on CityFibre's revolutionary independent network, all with the same great customer-first service.



Our 6,000 customers love us for our down-to-earth approach, our in-depth technical know-how and our customer-first service.

Connectivity that keeps you performing at your best.



Flexible

Our wide range of broadband speeds suit every business need and budget.



Reliable

Connecting your own dedicated line with our revolutionary full-fibre network means you'll never contend with others for bandwidth.



Secure

Our network has security built-in, protecting your business and customer data as standard.



Managed

As your partner, we're here whenever you need us from installation and remote monitoring to SLAs, guaranteed fix times and 24/7 support.

CityFibre

With your connectivity sorted, it's time to ensure you're communicating and collaborating brilliantly. You need solutions that make your colleagues' and customers' lives easier.

Here are some ways we can help:



Cloud telephony

Our communication solutions deliver flexibility and control alongside intuitive portals and in-depth reporting. Whether you're looking to communicate through handsets, headsets, mobiles or apps we can help you work out what's right.



Microsoft Teams

What could be better than being able to communicate and collaborate in one place? We can help you make Teams a single, interface for all your communication needs, allowing every user to maximise their productivity with one place to work.



Wi-Fi

Connectivity to the office isn't always enough. You need a reliable Wi-Fi setup so that every colleague can always be online in every corner of every room. Almost always on just isn't good enough.



Mobile

Consultative and agnostic, our mobile solutions are designed for your best fit, not ours; right network, right commercials, right devices, every time. We can even provide multi-network SIMs that will keep you connected, wherever you are.



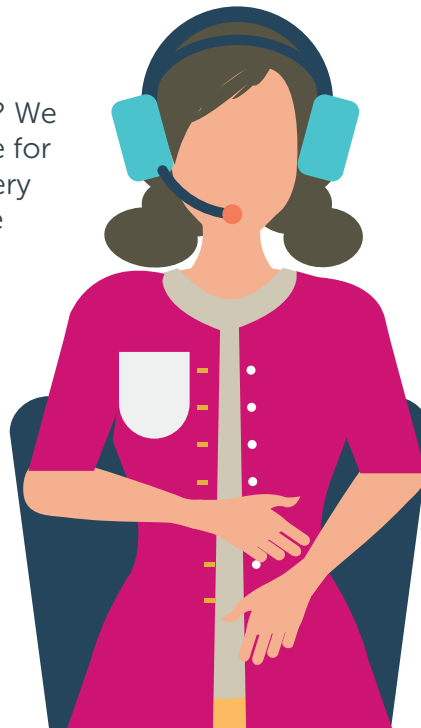
Remote support

Our team of communications and technology experts can be on hand to become part of your support system, here whenever you need us.



Cloud contact centre

Whether your contact needs are simple or complex, our contact centre solutions range from voice through to omnichannel. So whether the enquiry comes through phone, email, social or WhatsApp, you'll always be able to deal with it quickly and easily.



The Windsor team.

It's our team that brings it all together; tech experts, solution architects, project management professionals and onboarding specialists, working collaboratively to deliver something incredible.

We follow a structured process with every customer, big or small, to make sure that the solution delivered aligns to every user and business need.



Identify

We'll run worker-style workshops to understand how everyone works and what you need to deliver a great experience.



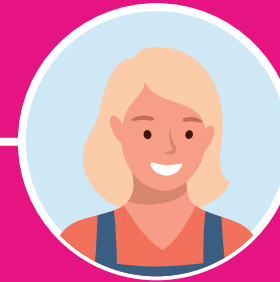
Analysis

We'll consider your operational, technical, budgetary and customer requirements to ensure benefit.



Strategy

We'll augment the user and technical needs with your business goals to get a 360-degree roadmap for success.



Design

First we'll focus on getting you the furthest forward in the quickest time, then we'll design to scale and rollout with minimal impact.



Proposal

Only now will we recommend your final solution options with key deliverables, measures and an installation plan.

If you'd like to work with a different kind of partner, one for which nothing is ever too much and who will always put you first, talk to us today.



hello@windsor-telecom.co.uk
0800 160 1111